



Psychologische Beratungsstelle

Marktplatz 10, 69151 Neckargemünd
Telephone 06223 - 3135
Fax 06223 - 8771
info@pbs-neckargemuend.de
www.pbs-neckargemuend.de

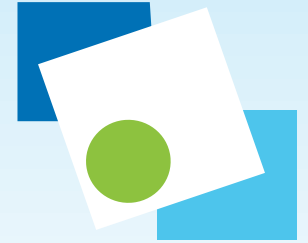
For enquiries and appointments
please contact us during our office hours:
Mon - Fr / 9 am - 2 pm



Psychologische Beratungsstelle

Mörikeweg 1, 69181 Leimen
Telephone 06224 - 141 9912
leimen@pbs-neckargemuend.de
www.pbs-neckargemuend.de

Bank Details
Sparkasse Heidelberg
IBAN DE16 6725 0020 0007 0062 25
BIC SOLADES1HDB



Counselling Centre

we offer help with parenting
issues, relational difficulties and
general interrogations

Neckargemünd
Leimen

Established by Evangelischer Kirchenbezirk
Neckargemünd - Eberbach

we counsel

Infancy Related Issues

- questions regarding upbringing and development (limits and rules, insecurities)
- challenging social behaviour (i.e. aggressiveness, anxieties and withdrawal)
- conflicts and family issues
- troubles in pre-school and school
- transient crisis (e.g. schoolstart, puberty)
- physical and sexual abuse

Teen Counselling

- family problems
- fears, insecurities, depression and aggressive behaviour
- relationships
- sexuality
- education or work-related issues
- dependance and compulsive behaviour patterns (i.e. media, alcohol, drugs, food)
- self-injuries, self-doubt, suicidal tendencies
- physical and sexual abuse

we coach

Couples and Relationships

- organising and shaping life together
- overcoming crisis and conflicts
- break-up or divorce, assuming parental responsibilities
- achieving parental consent regarding right of custody and parental access

Life Coaching

- Coping in difficult and stressful times
- overcoming issues like depression, anxieties and isolation
- questions of faith and meaning of life

we inform

Prevention

- lectures and parents' evening
- introduction to our field of activities
- general groups for children and parents
- distinctly assigned groups for parents of pre-school and school kids
- on-site counselling in pre-school and school

Supervision

- for professionals in pre-school and school
- for employees in youth welfare organisations
- for professionals in other psychosocial activities
- for the education and development of pedagogic personnel
- risk appraisal for „Schutzauftrag“ §§ 8a,b SGBVIII (protection assignment according to German law)

